

PRORIL

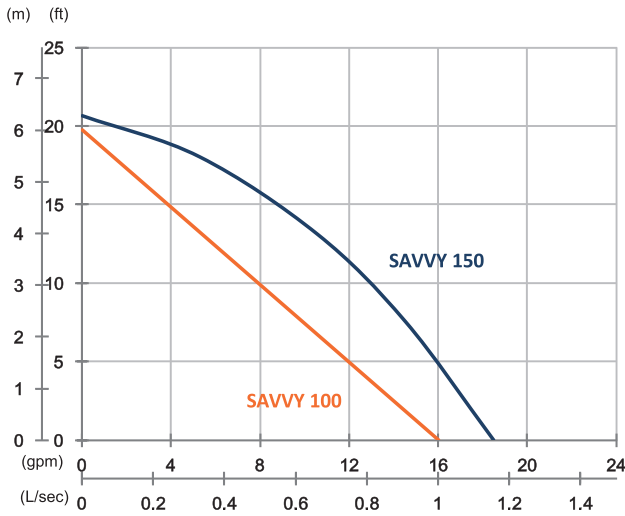
60Hz

Designed for light weight, excellent performance, low energy consumption, and easy maintenance, PRORIL submersible handy pumps serve a wide range of pumping applications on utility, construction, industrial, and municipal job sites.

Handy and Residue Pump **SAVVY 100/150**

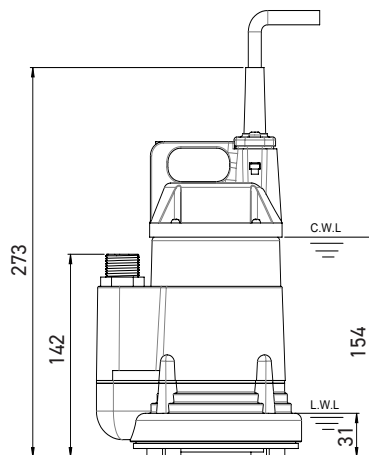
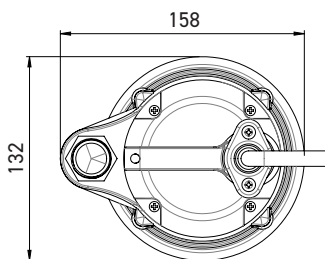
Handy Pump





	SAVVY 100	SAVVY 150
OUTPUT	0.13 HP (0.1 kW)	0.2 HP (0.15 kW)
OUTLET	0.75" (20 mm)	0.75" (20 mm)
SOLID PASSAGE	0.2" (6 mm)	0.2" (6 mm)
Weight	7 lbs/3 kg	7 lbs/3.2 kg
HEAD	Rated: 7 ft, 2 m Max: 20 ft, 6 m	Rated: 13 ft, 4 m Max: 21 ft, 6.3 m
FLOW	Rated: 11 gpm, 0.7 L/s Max: 16 gpm, 1 L/s	Rated: 11 gpm, 0.7 L/s Max: 18 gpm, 1.2 L/s

Pump Type	Electric Submersible Pumps	
Motor	Phase	1-Phase
	Type	Induction Motor
	Poles	2 Pole (3450 rpm)
	Insulation	Class F
	Protector	Miniature Thermal Protector
	Starter	Capacitor-Run
Lubricant	Food Grade (ISO VG115)	
Specs.	Impeller Type	Opened
	Shaft Seal	Oil Seal
	Bearings	Shielded ball bearings
	Cable	CSA-Certified PVC Jacketed Cables 33 ft (10 m) or longer upon request
Materials	Pump Casing	Aluminum
	Impeller	Synthetic Polymers
	Motor Frame	Aluminum
	Motor Shaft	Carbon Steel
Max. Liquid Temperature	40°C (104°F)	
Max. Submersion Depth	5 m (16ft)	
pH Range	pH 5 - pH 8	



unit : mm
C.W.L : Continuous running water level
L.W.L : Lowest running water level